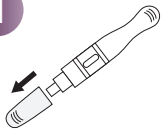


Preparation

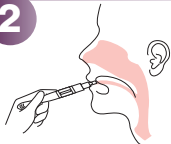
Bring tests, specimens, and/or controls to room temperature (15-30°C) before use. Donors should avoid placing anything (including food, drink, gum and tobacco products) in their mouth for at least 10 minutes prior to specimen collection.

1



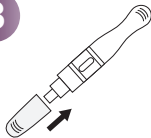
Remove the cap by holding the sides and pulling gently.

2



Place the collection pad underneath the tongue to collect saliva.

3



Remove from mouth as soon as color passes through the test window. Re-cap the device.

4



Wait for the colored line(s) to appear. The result should be read at 10 minutes.

Reading the Results

The result should be read at 10 minutes. Do not interpret the result after 20 minutes.



NEGATIVE



POSITIVE



INVALID

Scan for More Resources

btnx.com/product/thc-lollipop



BTNX Inc.

Tel: +1 888-339-9964

Email: support@btnx.com

www.btnx.com

Mon.-Fri. 9:00 AM - 5:30 PM EST



BTNX Inc.

722 Rosebank Road,

Pickering, ON L1W 4B2 Canada